



29

# A guide to our training courses and premises



01444 872 145



[www.electriciancourses4u.co.uk](http://www.electriciancourses4u.co.uk)



# Contents

3. About Us

4. Why Us?

5. Our Premises

6 - 13. Training Courses

6. Domestic Electrician Course

7. Domestic Electrician Package

8. 18th Edition Course

9. Part P Course

10. Level 2 Inspection and Testing Course

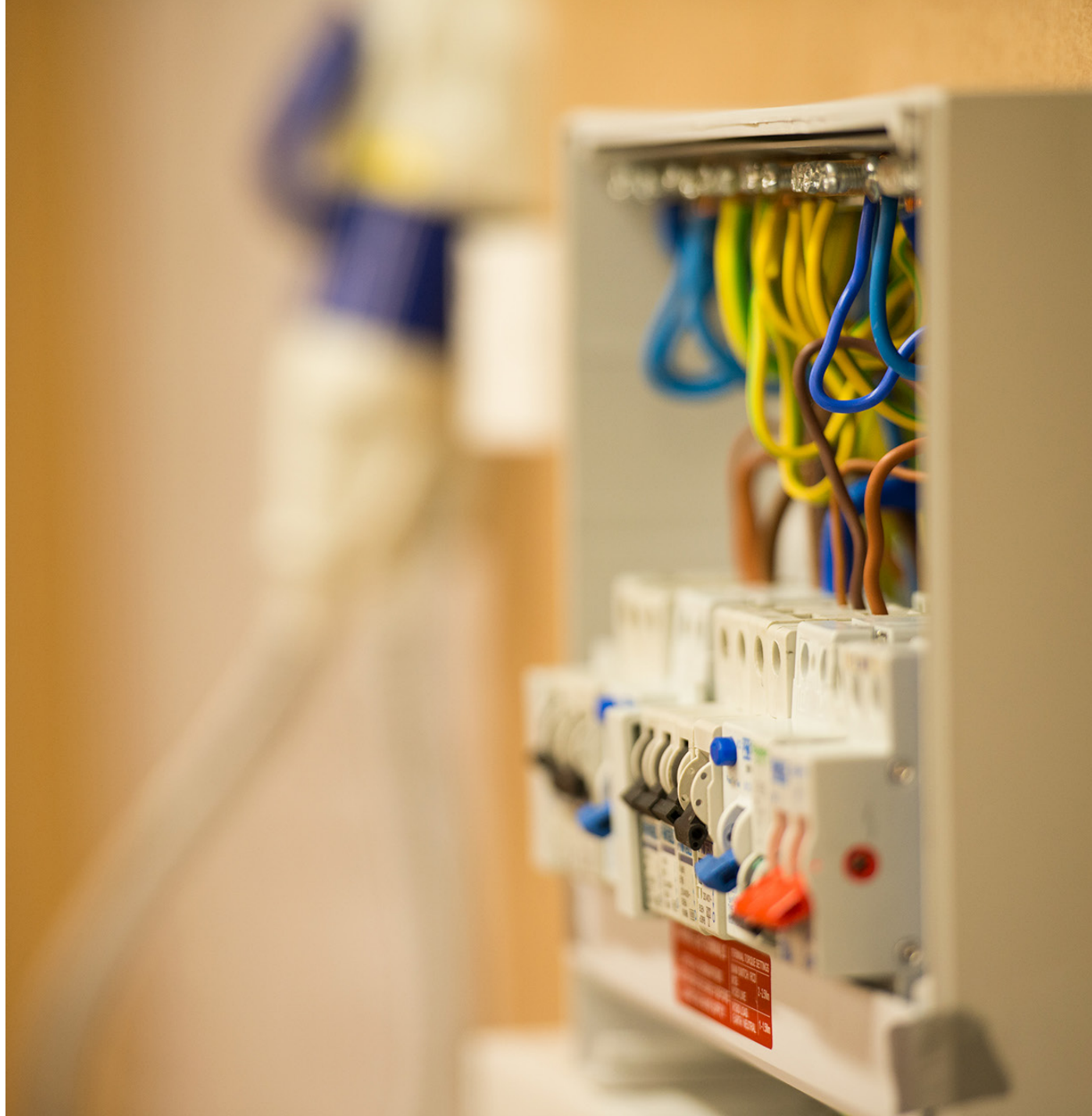
11. Key Stage Electrical Course

12. Electrical Experience Course

13. Level 3 Testing and Periodic Package

14. Our Prices at a Glance

15. Contact Us



01444 872 145



[www.electriciancourses4u.co.uk](http://www.electriciancourses4u.co.uk)



# About Us

We are the UK's only electrical training centre, with purpose built flats to ensure you get most realistic experience possible, to best prepare you for your future career as an electrician. Our electrician courses cater for new entrants, associate trades and experienced electricians, and there are a variety of electrical courses available to suit everyone's needs and skill level. If you aren't local, don't worry! Whether you come from London, Glasgow or even abroad, we can source local accommodation for you.

Our workshops are state of the art and unique, with no other centre providing such extensive practical installation experience like it. You will carry out your training with qualified and experienced electrical instructors, who will teach you how to become an electrician quickly and efficiently, ensuring you leave us feeling confident and qualified.

Find out more, [CLICK HERE>>](#)



“ I'm delighted with the new skill set I have acquired and am now much more confident about the future.



01444 872 145



[www.electrncourses4u.co.uk](http://www.electrncourses4u.co.uk)





# Why Us?

Beginning a new career is a huge decision and one that deserves careful consideration. If you wish to pursue a profession as a domestic electrician, EC4U can assist you in every step to reaching your goal.

- ✓ We pride ourselves on a 90%+ average pass rate on all training courses
- ✓ Our courses are ideal for newcomers or those looking to re-train
- ✓ There are no hidden costs, plus we offer price match and pay-as-you-train deals on selected courses
- ✓ We provide a unique 'Experience Week' training course to support your electrical qualifications and give you DIY know how
- ✓ Small class sizes for a better learning experience
- ✓ Aftercare support and specific business & marketing advice

Find out more, [CLICK HERE>>](#)



“ The guys at EC4U made things easy with their professionalism, sense of humour and experience.



01444 872 145



[www.electriciancourses4u.co.uk](http://www.electriciancourses4u.co.uk)





# Our Premises



## Purpose Built Flats

Fully constructed 'training flats' to give you experience in real life electrical scenarios and help prepare you for entry into the industry.



## Spacious Classrooms

Our classrooms & exam suites are fitted with modern projectors and IT systems. Class sizes are kept small to provide a good teacher-to-customer ratio.



## Large Workshops

Well equipped, extremely spacious workshops and training bays for a better practical learning experience and undoubtedly the very best money can buy.



## Convenience

Refreshment facilities with a dedicated customer kitchen, free customer parking and local cafeteria within minutes walk.



01444 872 145



[www.electriciancourses4u.co.uk](http://www.electriciancourses4u.co.uk)



# Domestic Electrician Course

15 Days

£1,700 incl. VAT

City & Guilds



## Who is this course for?

This is our most popular electrical course and was designed for those with little or no experience who are looking to become a domestic electrician. With these course qualifications you will be able to apply to join a Government approved Part P scheme provider and certify that your work complies with up to date Building Regulations. If you are new to electrical installation work and want to get qualified quickly then this is the course for you.



## Course overview

### Key Stage Electrician Course - (Duration 5 Days)

This course was designed specifically for those with little or no experience of electrical work, who are looking to either pursue a career as an electrician (self-employed or employed), combine it with an existing trade or to undertake their own property renovations. We will show you how to install electrical circuits inside and outside of properties and equip you with the essential knowledge and skills required to complete our Domestic Electrician Course.

### Part P Course City & Guilds 2393 - (Duration 2 Days)

This Part P course will deliver an excellent understanding and working knowledge of the Building Regulations which have been in place since the 1st January 2005. Part P of the Building Regulations is specific to electrical safety within domestic dwellings and covers the do's and don'ts we must follow as domestic installers when working in somebody's house.

### 18th Edition Wiring Regulations 2018 City & Guilds 2382 - (Duration 3 Days)

The objective of this course is to give you an excellent understanding of the current Wiring Regulations that electricians need to follow when doing any electrical installation

work. This qualification is essential to be able to apply and join a Government approved Part P competent scheme.

### Level 2 Inspection and Testing City & Guilds 2392 -

(Duration 5 Days)

In this course we will show you how to inspect and test any new or altered electrical circuits. Starting with dead tests to prove it is safe to turn the power back on and then live tests to prove that the circuits are safe and meet current wiring regulations criteria. You will then be shown how to complete the required paperwork (Schedule of Test Results) that needs to be left with the customer.



## Duration

This course consists of four separate courses and will last 15 days. The core course times are Monday - Friday 9:00 AM - 4:30 PM. Please take a look at our course FAQ'S for further course information.



## The exam

During this course you will take 3 multiple choice on-line exams and one practical assessment. For more detailed information on the exams and assessment please take a look at the individual course pages.



## Course literature

The following publications are to be purchased by all customers wishing to take part on the Domestic Electrician Course:

- IET On Site Guide
- IET Electrician's Guide to Building Regulations
- IET BS 7671 Wiring Regulations
- IET Guidance Note 3: Inspection & Testing
- NICEIC Inspection, Testing & Certification



01444 872 145



[www.electriciancourses4u.co.uk](http://www.electriciancourses4u.co.uk)

6

# Domestic Electrician Package

20 Days

£2,200 incl. VAT

City & Guilds



## Who is this course for?

One of our most popular courses which has been developed specifically for those who have little or no electrical knowledge and are looking to become a domestic installer. This package was designed to give you the core qualifications, competency and practical skills to enable you to join a Part P scheme. If you are new to the industry and need additional practical experience and skills then this is the right course for you.



## Course overview

### Key Stage Electrician Course - (Duration 5 Days)

This course was designed specifically for those with little or no experience of electrical work, who are looking to either pursue a career as an electrician (self-employed or employed), combine it with an existing trade or to undertake their own property renovations. We will show you how to install electrical circuits inside and outside of properties and equip you with the essential knowledge and skills required to complete our Domestic Electrician Course.

### Part P Course City & Guilds 2393 - (Duration 2 Days)

This Part P course will deliver an excellent understanding and working knowledge of the Building Regulations which have been in place since the 1st January 2005. Part P of the Building Regulations is specific to electrical safety within domestic dwellings and covers the dos and don'ts we must follow as domestic installers when working in somebody's house.

### 18th Edition Wiring Regulations 2018 City & Guilds 2382 - (Duration 3 Days)

The objective of this course is to give you an excellent understanding of the current wiring regulations that electricians need to follow when doing any electrical installation work. This qualification is essential to be able to apply and join a Government approved Part P competent scheme.

### Level 2 Inspection and Testing City & Guilds 2392 - (Duration 5 Days)

In this course we will show you how to inspect and test any new or altered electrical circuits. Starting with dead tests to prove it is safe to turn the power back on and then live tests to prove that the circuits are safe and meet current wiring regulations criteria. You will then be shown how to complete the required paperwork (Schedule of Test Results) that needs to be left with the customer.

### Experience Course - (Duration 5 Days)

The objective of this course is to introduce you to additional elements that are essential on your journey to becoming an electrician and make you feel confident when you leave our training centre to tackle your first job.

We will teach you how to quote for business and show you how long specific jobs should take so that you remain competitive but do not lose money. We also teach you practical skills that you will need to become a domestic electrician, run through various electrical scenarios and also complete a full consumer unit change.

This week is completed in our 3 purpose built flats to ensure this course is as realistic experience as possible.



## Duration

This course consists of five individual courses and will last 20 days. The core course times are Monday - Friday 9:00 AM - 4:30 PM. Please take a look at our course FAQ'S for further course information.



## The exam

During this course you will take 3 multiple choice on-line exams and one practical assessment. For more detailed information on the exams and assessment please take a look at the individual course pages.



## Course literature

The following publications are to be purchased by all customers wishing to take part on the Domestic Electrician Course:

- IET On Site Guide
- IET Electrician's Guide to Building Regulations
- IET BS 7671 Wiring Regulations
- IET Guidance Note 3: Inspection & Testing
- NICEIC Inspection, Testing & Certification



01444 872 145



[www.electriciancourses4u.co.uk](http://www.electriciancourses4u.co.uk)

7



# 18th Edition Course

3 days

£420 incl. VAT

City & Guilds



## Who is this course for?

The 18th Edition course is ideal for newcomers to the electrical industry or also for those people wishing to update their existing qualifications. This is a must have qualification for anyone looking to become a competent domestic electrician. It's a short course which will teach you how to navigate your way around the Wiring Regulations book in preparation for the City & Guilds 18th Edition exam.



## Course overview

**City & Guilds 2382-18 18th Edition Course - (Duration 3 days)**

The objective of this 18th Edition course is to give you an excellent understanding of the current Wiring Regulations that electricians need to follow when doing any electrical installation work. This electrical qualification is essential to be able to apply and join a Government approved Part P competent scheme. This electrician course is the most up to date 18th Edition course, older courses including the City & Guilds 2382-15 and 2382-10 have been replaced with this course.

The BS7671 Wiring Regulations consists of over 550 pages that we must comply with as electricians. Initially when you first look at the book it can appear quite daunting and difficult to interpret, however, after our 3 day course you will be able to navigate your way through the book with ease. As electrical training specialists, we will ensure you completely understand the key areas of the 18th Edition book and how to reference it in preparation for the open book exam at the end of the course.

## Our 18th Edition Course includes the following:

### ✓ Introduction to the City & Guilds 2382-18 electrical qualification and the reason for its existence

This part explains why we have regulations and outline the past. For example the 1st Edition of the regulations were introduced on the 21st June 1882 and consisted of four pages.

The regulations were introduced to coincide with the demise of gas lighting and the introduction of electric lighting. Today we are currently in the 18th Edition.

### ✓ BS7671 2018 structure and design and how to use it

We will give you a detailed understanding of the 18th Edition book, how it is numbered, structured and how to successfully navigate your way around the book.

### ✓ Parts 1 through to 7

The 18th Edition book consists of seven parts with the largest covering special installations or locations and the smallest being definitions. We will ensure that you understand how to reference all seven parts and appendices of the book in preparation for your exam on the last day of your course.



## Duration

This course takes place over a 3 Days. The core course times are Monday – Friday 9:00 AM – 4:30 PM. Please take a look at our course FAQ'S for further course information.



## The exam

The exam for the 18th Edition course is taken online with 60 multiple choice questions. You will have 120 minutes in which to complete it. You are able to take your Wiring Regulations book in with you as you will need to reference it to get the correct answers.



## Course literature

The following publications are to be purchased by all customers wishing to take part on the 18th Edition course:  
- IET BS7671 Wiring Regulations



01444 872 145



[www.electrncourses4u.co.uk](http://www.electrncourses4u.co.uk)



# Part P Course

2 days

£345 incl. VAT

City & Guilds



## Who is this course for?

This course is perfect for those wishing to undertake domestic electrical installation work and demonstrate that it complies with Part P of the Building Regulations. This course alone will not enable you to self-certify your own electrical work, however it is one course within our Domestic Electrician Course which will allow you to join a Part P scheme and self-certify.



## Course overview

City & Guilds 2393-10 Part P Course - (Duration 2 days)

This Part P course will deliver an excellent understanding and working knowledge of the Building Regulations which have been in place since the 1st January 2005. Part P of the Building Regulations is specific to electrical safety within domestic dwellings and covers the dos and don'ts we must follow as domestic Installers when working in somebody's house.

## Our Part P Course includes the following:

### ✓ Legislation

Health and safety, the Building Regulations, approved document P, notification to building control and non-notifiable work.

### ✓ Design

Design of circuits, selection of materials and installation.

### ✓ Mains Position

Location, supply systems, earthing and bonding, labelling and installing of residual current devices.

### ✓ Circuit Specifications

Standard circuits, final circuits, fused connection units, lighting circuits, cooker circuits and water and space heating.

### ✓ Special Locations

Kitchens, locations containing a bath or shower and outdoor lighting.

### ✓ Inspection and Testing

Inspection, testing, operation of residual current devices and circuit breakers.

### ✓ Safety

Pre-work surveys and tests, safe isolation.

### ✓ All Parts of Schedule 1 relating to electrical work

Parts A,B,C,E,F,L,M,P.

### ✓ Government approved Part P Competent Scheme Providers

ELECSA, NAPIT, NICEIC



## Duration

This course takes place over a 2 Days. The core course times are Monday – Friday 9:00 AM – 4:30 PM. Please take a look at our course FAQ'S for further course information.



## The exam

At the end of this Part P course you will have to take a multiple choice online exam which consists of 20 questions and you have up to 40 minutes to complete it. The good news is that you are able to take your course book in with you (Electricians Guide to the Building Regulations) as you are being tested not only on your knowledge but also your ability to reference the book to find the right answer.



## Course literature

The following publications are to be purchased by all customers wishing to take part on the Part P course:

- IET Electrician's Guide to Building Regulations



01444 872 145



[www.electriciancourses4u.co.uk](http://www.electriciancourses4u.co.uk)

9

# Level 2 Inspection and Testing Course

5 days

£495 incl. VAT

City & Guilds



## Who is this course for?

This City & Guilds Inspection and Testing Course will teach you how to safely inspect, test and verify newly installed or extended circuits. This course is ideal for newcomers who do not have any previous inspection and testing knowledge or experience and would like to add this valuable skill set to their qualifications portfolio.



## Course overview

City & Guilds 2392-10 Level 2 Inspection and Testing Course - (Duration 5 days)

In this course we will show you how to inspect and test any new or altered electrical circuits starting with dead tests to prove it is safe to turn the power back on and then live tests to prove that the circuits are safe and meet current wiring regulations criteria. You will then be shown how to complete the required paperwork (Schedule of Test Results) that needs to be left with the consumer unit/fuse box to comply with Part P of the Building Regulations.

## Our Level 2 Inspection and Testing Course includes the following:

### ✓ General Requirements

Safety, required competence, certificate and reports.

### ✓ Initial Verification

Purpose, certificates, scope, Initial inspection, initial testing, electrical installation certificate, sequence of tests.

### ✓ Test Instruments

Accuracy, low resistance ohmmeters, Insulation resistance ohmmeters, earth fault loop impedance testers, earth electrode resistance testers and residual current device testers.

### ✓ Forms

Initial inspection and testing/minor works and the Model Forms for certification and reporting.



## Duration

This course takes place over a 5 Days. The core course times are Monday – Friday 9:00 AM – 4:30 PM. Please take a look at our course FAQ'S for further course information.



## The exam

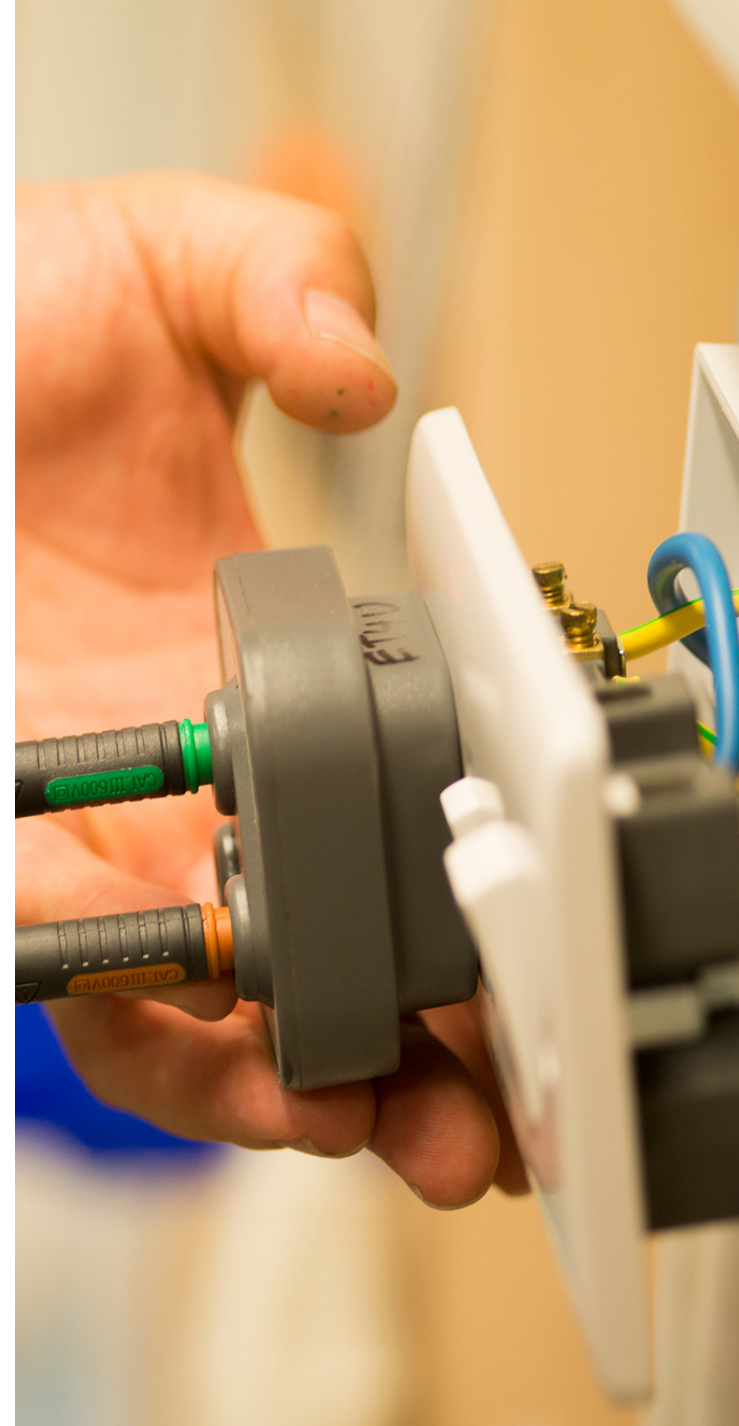
At the end of this Level 2 Inspection and Testing course you will have two exams to take: an online multiple choice exam consisting of 50 questions, which you will have 1 hour and 40 minutes to complete, as well as a 2 hour practical assessment where you will have to demonstrate that you know how to safely isolate a consumer unit, perform all the live and dead tests and complete all necessary paperwork.



## Course literature

The following publications are to be purchased by all customers wishing to take part on the Level 2 Inspection and Testing course:

- IET On Site Guide
- IET Guidance Note 3: Inspection & Testing
- NICEIC Inspection, Testing & Certification



01444 872 145



www.electriciancourses4u.co.uk



# Key Stage Electrical Course

5 Days

£440 incl. VAT

EC4U



## Who is this course for?

This course is ideal for people who have little or no electrical installation experience and are looking to become a domestic electrician. We have specifically developed this course to give you the best opportunity to pass your exams and assessments which will be required if you are to obtain the right qualifications and competency to become a domestic installer. If you want to know the basics before progressing further this is the course for you.



## Course overview

### Key Stage Electrician Course - (Duration 5 Days)

Our EC4U Key Stage course was developed particularly for people with little or no understanding of electrical installations, to give you the initial knowledge and skills required to become a domestic electrician. The course will provide you with crucial knowledge, skills and competency before taking additional courses that are needed to become a domestic Installer.

### Our Key Stage Electrical Course includes the following:

#### ✓ Electrical Hazards

Safety, electrical shocks direct and indirect, protection against shocks, faults and fires.

#### ✓ Basic Circuits

Consumer unit, circuit breakers, main switches, residual current devices, conduit and trunking.

#### ✓ Correct Use of Electrical Tools

We will demonstrate throughout the week the correct way to use all the tools and electrical testers.

#### ✓ Preparation and use of cable

You will be shown the correct way to prepare your cables.

#### ✓ Socket Circuits

Learn how to correctly install ring and radial socket circuits.

#### ✓ Cooker Circuits

Let us show you and explain why these circuits use larger cable sizes.

#### ✓ Lighting Circuits

We will teach you about lighting circuits, including loop in and junction box methods, and one way, two way, intermediate, two gang one way and two gang two way switching.

#### ✓ Consumer Units

Explain the design, operation and teach you how to correctly connect cables to them.

#### ✓ Design of Circuits

Let us show you how to understand and design a circuit prior to installation and ensure that the circuit will operate safely and comply with BS7671 2018.

#### ✓ Requirements for Earthing

Understand why this is such a critical aspect of an electrical installation.

#### ✓ Safe isolation

To ensure everyone is safe during any electrical work that you undertake we will show you how to safely isolate the electricity.

#### ✓ Dead Testing of Circuits

Once the circuits have been installed it is essential for you to test all new or additions to circuits and record the results to prove they are safe before turning the power back on. Let us show you how.



## Duration

This course takes place over a 5 Days. The core course times are Monday – Friday 9:00 AM – 4:30 PM. Please take a look at our course FAQ'S for further course information.



## The exam

This course does not have any exams.



## Course literature

The following publications are to be purchased by all customers wishing to take part on the Key Stage Electrical course:

- IET On Site Guide

- NICEIC Inspection, Testing & Certification



01444 872 145



www.electriciancourses4u.co.uk

11

# Electrical Experience Course

5 Days

£500 incl. VAT

EC4U



## Who is this course for?

This course has been designed specifically for people who would like additional practical experience to give them the confidence before entering into the market as a domestic electrician. It offers a unique opportunity to undertake real-life projects within our 3 purpose built flats. If you want to get top tips and advice from instructors with years of on-site experience then this is certainly the course for you.



## Course overview

### EC4U Electrical Experience Course – (Duration 5 Days)

The objective of this course is to help you feel confident when you leave our training centre to tackle your first job. On this course you will be put into real life scenarios in our large workshops that contain 3 flats to make your experience as realistic as possible. We have a selection of commonly encountered consumer units from a variety of eras, which you will fully upgrade to the current requirements of the Wiring Regulations.

We do not have a specific course structure that we stick to as we like to ask our customers which parts they would like to focus on so they get the most from the course. We want to give you what you need to feel confident when you leave us, so come and make a few mistakes with us and not at your customer's house.

## Our Experience Course includes the following:

### ✓ Quoting advice

Hourly rates, job prices, planning, design, fixtures and fittings.

### ✓ Installation of circuits

Quote, plan, design, install both lighting and socket circuits for inside and outside scenarios.

### ✓ Inspection, Testing and Certification

Test and inspect all of the circuits you have installed, fill out the correct documentation and ensure the results meet the regulations.

### ✓ Down lighters, extractor fans and fire alarms

Design, plan, position and install these commonly encountered circuits.

### ✓ Consumer unit change

From an old re-wireable to a modern dual-split board, we'll teach you the most effective method.

### ✓ Correct use of testers and tools

Let us show you how to correctly use 17th Edition multifunction testers and tools of our trade.

### ✓ Setting yourself up in business and marketing advice

We will explain how to set yourself up as a new business, either self employed or Limited Company, and go through marketing techniques and how to create new business opportunities.

### ✓ 3 Phase supply

We will make you aware what to expect from a 3 phase electrical supply.



## Duration

This course takes place over a 5 Days. The core course times are Monday – Friday 9:00 AM – 4:30 PM. Please take a look at our course FAQ'S for further course information.



## The exam

There is no exam for this course.



## Course literature

The following publications are to be purchased by all customers wishing to take part on the Experience Course:

- IET On Site Guide

- IET Electrician's Guide to Building Regulations



01444 872 145



[www.electrificationcourses4u.co.uk](http://www.electrificationcourses4u.co.uk)



# Level 3 Testing and Periodic Package

7 days

£795 incl. VAT

EAL



## Who is this course for?

If you are looking to enhance your existing Inspection, Testing and Periodic skills, knowledge and qualifications then this course is the right one for you. The two courses combined are ideal for either existing electrical contractors with a good working knowledge of testing and inspection and those wanting to improve their current qualifications.



## Course overview

The EAL Level 3 Inspection, Testing and Periodic Package - 603/2625/6 (Duration 7 days)

This EAL qualification has been put together to replace the old City & Guilds 2391 qualification which has now expired. It is an alternative qualification to the City & Guilds 2391-52 course. All the exams and assessments associated with the EAL courses are undertaken before you leave the training centre to give you the best chance of getting the result you deserve.

The objective of the course is to give you a good understanding of the theory and practices required to do both a periodic inspection, and initial verification and commissioning of electrical installations. The course will improve both your inspection, testing and periodic inspection skills.

**Our Level 3 Testing and Periodic includes the following:**

- ✓ Introduction to the qualification
- ✓ Initial verification
- ✓ Inspection of installations
- ✓ Safe isolation

- ✓ Dead and live testing
- ✓ Certification
- ✓ Commissioning
- ✓ Interpretation of test results
- ✓ EICR codings
- ✓ Completion of EICR reports
- ✓ Differences between initial verification and periodic inspection



## Duration

This course takes place over a 7 Days. The core course times are Monday – Friday 9:00 AM – 4:30 PM. Please take a look at our course FAQ'S for further course information.



## The exam

During the course you will complete one EAL online multiple choice exam and two practical assessments. The online exam is open book so you will be able to take your course book into the exam with you.

**The Online exam will consist of:**

60 multiple choice questions - 2 hours

**The 2 Practical assessments will be:**

Periodic inspection assessment - 1 hour

Periodic inspection and testing assessment - 2.5 hours



## Course literature

The following publications are to be purchased by all customers wishing to take part on the Level 3 Testing and Periodic Package:

- IET BS 7671 Wiring Regulations
- IET Guidance Note 3: Inspection & Testing
- NICEIC Inspection, Testing & Certification
- NICEIC Domestic Periodic inspection, testing and reporting



01444 872 145



[www.electriciancourses4u.co.uk](http://www.electriciancourses4u.co.uk)

# Our prices at a glance



## Domestic Electrician Course

Duration: 15 Days C&G

Cost: £1,700 incl. VAT



## Level 2 Inspection and Testing Course

Duration: 5 Days - C&G

Cost: £495 incl. VAT



## Domestic Electrician Package

Duration: 20 Days C&G

Cost: £2,200 incl. VAT



## Key Stage Electrical Course

Duration: 5 Days - EC4U

Cost: £440 incl. VAT



## 18th Edition Course

Duration: 3 Days - C&G

Cost: £420 incl. VAT



## Electrical Experience Course

Duration: 5 Days - EC4U

Cost: £500 incl. VAT



## Part P Course

Duration: 2 Days - C&G

Cost: £345 incl. VAT



## Level 3 Testing and Periodic Package

Duration: 7 Days - EAL

Cost: £795 incl. VAT

view our prices, [CLICK HERE>>](#)



01444 872 145



[www.electriciancourses4u.co.uk](http://www.electriciancourses4u.co.uk)

14



# Contact us

Unit 29,  
Mid Sussex Business Park,  
Folders Lane East,  
Ditchling, East Sussex,  
BN6 8SE

tel: 01444 872 145

email: [info@electriciancourses4u.co.uk](mailto:info@electriciancourses4u.co.uk)

web: [www.electriciancourses4u.co.uk](http://www.electriciancourses4u.co.uk)



If you do not live close to EC4U and need somewhere to stay while undertaking your training course, please contact us for full accommodation advice.

*“ We would love the opportunity to train you*



01444 872 145



[www.electriciancourses4u.co.uk](http://www.electriciancourses4u.co.uk)